

SDA PROPERTY marketplace



LOGANLEA

Platinum Level High Physical Support
3 Bedroom + OOA Home

House Size: 238sqm

Land Size: 613sqm

Offers over:

\$1.1m

Current income (2 tenants):

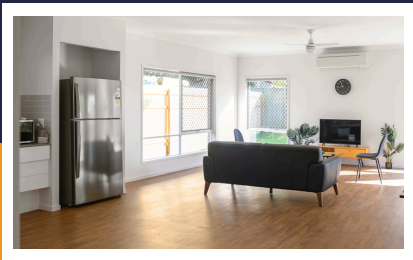
\$110,558 p.a. gross

10% gross yield*

Potential income (3 tenants):

\$180,492 p.a. gross

16% gross yield*



Rare opportunity to buy a completed SDA Property

- Enhanced wheelchair access with wide hallways and doorways
- Extra large bedrooms
- Accessible ensuite to each bedroom with hobless shower, pedestal sink, hand rails, shower seat
- Easy circulation space in living, kitchen, bedrooms, bathrooms & outdoor area
- Smooth transitions at front door, alfresco and throughout the home
- iSaint Assistive Technology with automated blinds, lights, A/C
- Alexa Echo Dot in each bedroom
- Carer room for overnight onsite assistance (OOA)

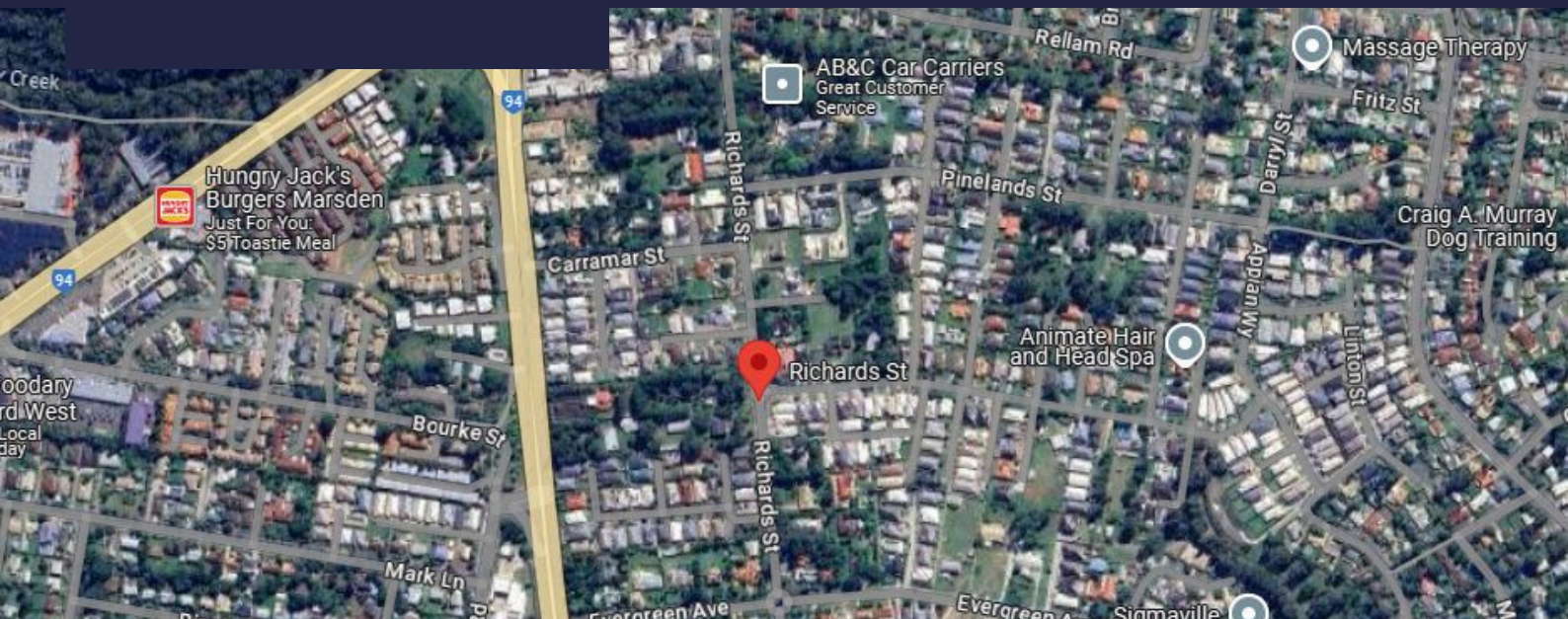


*Current income is accurate at time of publication but may change at any time. Current income is based on 2 x Fully Accessible SDA funded participant for a 3 bedroom + OOA home in Logan. Potential income for 3 tenants is based on the current participants plus 1 x High Physical Support (HPS) funded SDA participant for a 3 bedroom + OOA home in Logan from NDIS Price Calculator 2024/25 issued July 24. Income is dependent on number of tenants and approved funding levels and is not guaranteed. Land and house sizes are approximate only and images are indicative.

Ph: 07 3899 3873

enquiries@sdapropertymarketplace.com.au

PD
PROPERTY DIRECT



Location Features

Located in easy access to the M1 for connections to the Gold Coast and the Brisbane CBD, this home is also close to:

- Local Park - 350m
- Loganlea Medical Centre - 1.1km
- Aldi - 1.3km
- Coles - 1.6km
- Logan Hospital - 3.7km
- Kingston Train Station - 5km
- Logan Hyperdome - 12km

